



Indian Centre for Space Physics

[Autonomous Institute registered under Section 25, The Company Act 1956]
43, Chalantika, Garia Station Road, Kolkata – 700 084, West Bengal
Phone: +91-(0) 33 2462 2153, 2436 6003, Fax: 91 33 2436 6003, Ext. 28
Webpage - <http://csp.res.in>, Email – root@csp.res.in

NOTICE INVITING TENDER

Tender Ref. No.: ICSP/ Integrated Campus/2019-2020/01

Dated: 26/04/2019

Sealed tenders are invited from bonafide contractors with credential for proposed Building Integrated Campus of Indian Centre for Space Physics, Barakhola, Purba Jadavpur, for construction of Phase A and Phase B including / optional supply and labour charges for steel, R.M.C, Cement, Bricks, sand etc as necessary and as per approved drawing and BOQ approved brand.

Phase A

Sub Structure for Pile cap, columns up to tie-beam, Tie beam, (Hostel building area) and S.U.G.W.R. (12000 Lts), SEPTIC TANK, S.U.G.WATER RESERVOIR (25000 Lts)

Phase B

Concrete component of the super structure consisting of columns, beams, roofs etc for each floor.

Shouraband
26/4/19

Director
Indian Centre for Space Physics

SCHEDULE OF TENDERING:

1.	Date of uploading of N.I.T. & other Documents (online) (Publishing Date)	26/04/2019 at HH:MM IST
2.	Documents download start date (Online)	26/04/2019 from HH:MM IST
3.	Bid Submission Start Date & Time	26/04/2019 from HH:MM IST
4.	Documents download end date (Online) & Bid Submission Last Date & Time at Indian Centre for Space Physics, 43, Chalanika, Garia Station Road, Kolkata 700084	04/05/2019 up to 17:00 IST
5.	OPENING OF FINANCIAL BID	05/05/2019
6.	Documents to be Submitted	<p>Tenderer should submit the scanned copies in the electronic format at proper place of the following documents:-</p> <ul style="list-style-type: none">i) Valid Trade License of the Companyii) PAN CARDiii) Valid Acknowledgement of IT returns (For last 3 years)iv) PT Certificate for financial year 2018-2019v) Valid document for GST registration and up to date copy of return submissionvi) The credential/completion certificate of similar nature of work shall be submitted



26/4/19

Annexure I

FURNISHING BASIC INFORMATION

(To be furnished in the company's official letter pad)

1.	Name of the Bidder	
2.	Address for Communication	
3.	Contact Number(s)	
4.	E-mail ID	
5.	Trade License No. (Please enclose copy of Trade License)	
6.	PAN(Please enclose copy of PAN card)	
7.	VAT No.(Please enclose copy of VAT)	
8.	Do you have previous experience for supplying similar nature of items (Please enclose copy of purchase order & user list, if yes)	
9.	Annual Turnover as per Audited P/L ACCOUNTS & BALANCE SHEET	2015-16: Rs..... 2016-17: Rs..... 2017-18: RS..... Average Annual Turnover: Rs.....
10.	Status of the bidder(Please enclose copy authenticating your status)	Manufacturer/Dealer/Distributor/Selling Agent/Stockist (Please put tick mark)

I hereby declare that the above information is true and correct to the best of my knowledge and belief. In case of any false/wrong/misleading information, I shall be bound to take the decision taken by the Tender Inviting Authority.

Signature of the Bidder

(With Seal)



**Site: Indian Centre for Space Physics (Integrated Campus), Barakhola, Purba
Jadavpur. (PHASE – A)**

**BOQ for All Type of Pile Cap, Columns up to the tie beam, Tie beams, S.U.G.W.R. (12000
Lts.), SEPTIC TANK, S.U.G.WATER RESORVOIR (25000 Lts. For Fire) etc.**

Sl.No.	Description	Unit	Typical Qty	Unit Price	Total Price	GST (%)	Total Including GST
1	Earth work in excavation of foundation trenches or drains, in all sorts of soil including mixed and removing, spreading or stacking the spoils within a lead of 75 m. as directed. The item includes necessary trimming the sides of trenches, leveling, dressing and ramming the bottom, bailing out water as required complete. For 21 nos. Two pile, 1 no. Three pile, 2 nos. four pile, and 1 no. five pile (pile cap), S.U.G.W.R. (12000 Lts), SEPTIC TANK, S.U.G.WATER RESERVOIR (25000 Lts) for Fire and guard wall	Cum.	775				
2	Dismantling all types of cement concrete works, stacking serviceable materials at site and removing rubbish as directed within a lead of 75m	Cum.	10				
3	Earth work in filling in foundation trenches or plinth with good earth, in layers not exceeding 150 mm. including watering and ramming etc. layer by layer complete with earth obtained from excavation of foundation.	Cum.	75				
4	Filling in foundation or plinth by silver sand in layers as directed and consolidating the same by thorough saturation with water, ramming complete including the cost of supply of sand. (payment to be made on measurement of finished quantity)	Cum.	150				
5	Supply and labour charges for Single Brick Flat Soling of picked jhama bricks including ramming and dressing bed to proper level and filling joints with local sand.	Sq.m.	50				
6	Providing and laying cement concrete bedding 1:3:6 (1 cement: 3 coarse sand: 6 graded stone aggregate, 40mm nominal size) in foundations including	Cum.	35				

me
26/4/19

	shuttering (if necessary), placing the mix in its final location , compacting and curing the same complete as per specification & direction of the Engineer-in-charge. for PCC						
7	Hire and labour charges for shuttering with centering and necessary staging up to 4 m using approved stout props and thick hard wood planks of approved thickness with required bracing for concrete slabs, beams, tie beams and columns, lintels curved or straight including fitting, fixing and striking out after completion of works						
(a)	Using Steel shuttering or 9 to 12 mm thick approved quality ply board shuttering in any concrete work.	Sq.m.	370				
(b)	25 mm to 30 mm thick wooden shuttering as per decision & direction of Engineer-In-Charge.	Sq.m.	1				
8	Supply and labour charges for Brick work with 1st class bricks in cement mortar (1:4)	Cum.	75				
9	Supply and labour charges for Plaster work (to wall, floor, ceiling etc.) with sand and cement mortar including rounding off or chamfering corners as directed and raking out joints including throating, nosing and drip course, scaffolding/staging where necessary (Ground floor).						
(a)	20 mm thick plaster (Inside Wall) With 1:6 cement mortar including net.	Sq.M	200				
(b)	15 mm thick plasters (outside Wall) with 1:6 cement mortar including net.	Sq.M	250				
(c)	With 1:4 cement mortar and 10 mm thick plaster (Ceiling) including net.	Sq.M	100				
10	Supplying ready mixed concrete of M 25 Grade with well graded stone chips of 20 mm nominal size containing designed quantity of cement per Cum of wet concrete produced in computerized batching plant under controlled condition using approved super plastisizer, designing concrete mix following I.S. 10262 and I.S. 456,	Cum.	100				

me
26/4/19

	transporting the mix with agitation in transit mixer to work site depositing the mix on a platform erected for the purpose at required levels of concreting and then placing the mix in its final location , compacting and curing the same complete as per specification & direction of the Engineer-in-charge including computerized batching plant transit mixer with all accessories vibrators etc. inclusive of all other incidental charges in this connection complete. cement to be supplied by VENDOR (ACC/ ULTRATECH/ LAFARGE or SIMILAR)						
11	Supplying ready mixed concrete of M 20 Grade with well graded stone chips of 20 mm nominal size containing designed quantity of cement per Cu.m of wet concrete produced in computerized batching plant under controlled condition using approved super plastisizer, designing concrete mix following I.S. 10262 and I.S. 456, transporting the mix with agitation in transit mixer to work site depositing the mix on a platform erected for the purpose at required levels of concreting and then placing the mix in its final location, compacting and curing the same complete as per specification & direction of the Engineer-in-charge including computerized batching plant transit mixer with all accessories vibrators etc. inclusive of all other incidental charges in this connection complete. [Cement to be supplied by VENDOR (ACC/ ULTRATECH/ LAFARGE or SIMILAR)]	Cum.	1				
12	Reinforcement cement concrete work in M-25 i.e. 1:1:2 (1 cement: 1 coarse sand: 2 graded stone aggregate 20mm nominal size) including placing the mix in its final location , compacting and curing the same complete as per specification & direction of the Engineer-in-charge but excluding cost of centering and shuttering. (ACC/ ULTRATECH/ LAFARGE or SIMILAR)]	Cum.	1				

me
26/4/15

13	Reinforcement cement concrete work in M-20 i.e. 1:1.5:2 (1 cement: 1.5 coarse sand: 2 graded stone aggregate 20mm nominal size) including placing the mix in its final location , compacting and curing the same complete as per specification & direction of the Engineer-in-charge but excluding cost of centering and shuttering. (ACC/ ULTRATECH/ LAFARGE or SIMILAR)]	Cum.	1					
14	Reinforcement cement concrete work in mixing of 1:2:4 (1 cement: 2 coarse sand: 4 graded stone aggregate 20mm nominal size) including placing the mix in its final location , compacting and curing the same complete as per specification & direction of the Engineer-in-charge but excluding cost of centering and shuttering. (ACC/ ULTRATECH/ LAFARGE or SIMILAR)]	Cum.	1					
15	Reinforcement for reinforced concrete work in all sorts of structures including distribution bars, stirrups, binders, etc initial straightening and removal of loose rust (if necessary), cutting to requisite length, hooking and bending to correct shape, placing in proper position and binding with 16 gauge black annealed wire at every intersection, welding , complete as per drawing and direction. Including supply of steel of 500D TMT bar (SAIL/ TATA TISCON/ or SIMILAR) as per drawing	M.T	12					
16	Supply and fixing of good quality 450 Ø C.I.COVER for SEPTIC TANK	Nos.	5					
17	Supply and fixing of good quality 500 Ø MANHOLE COVER	Nos.	5					
Sub Total								

(Total Rupees.....)

me
26/4/15

Site: Indian Centre for Space Physics (Integrated Campus), Barakhola, Purba Jadavpur. (PHASE – B)

BOQ for Floor wise Super Structure for Columns ,Beams, Roof etc.

Sl.No.	Description	Unit	Typical Qty	Unit Price	Total Price	GST (%)	Total Including GST
1	Hire and labour charges for shuttering with centering and necessary staging up to 4 m using approved stout props and thick hard wood planks of approved thickness with required bracing for concrete slabs, beams, tie beams and columns, lintels curved or straight including fitting, fixing and striking out after completion of works						
(a)	Using Steel shuttering or 9 to 12 mm thick approved quality ply board shuttering in any concrete work.	Sq.m.	540				
(b)	25 mm to 30 mm thick wooden shuttering as per decision & direction of Engineer-In-Charge.	Sq.m.	1				
2	Supply and labour charges for Brick work with 1st class bricks in cement mortar (1:4)	Cum.	1				
3	Supply and labour charges for Plaster work (to wall, floor, ceiling etc.) with sand and cement mortar including rounding off or chamfering corners as directed and raking out joints including throating, nosing and drip course, scaffolding/staging where necessary (Ground floor).						
(a)	20 mm thick plaster (Inside Wall) With 1:6 cement mortar including net.	Sq.M	1				
(b)	15 mm thick plasters (outside Wall) with 1:6 cement mortar including net.	Sq.M	1				
(c)	With 1:4 cement mortar and 10 mm thick plaster (Ceiling) including net.	Sq.M	1				
4	Supplying ready mixed concrete of M 20 Grade with well graded stone chips of 20 mm nominal size containing designed quantity of cement per Cu.m of wet concrete produced in computerized batching plant under controlled	Cum.	60				

me
26/4/19

	<p>condition using approved super plastisizer, designing concrete mix following I.S. 10262 and I.S. 456, transporting the mix with agitation in transit mixer to work site depositing the mix on a platform erected for the purpose at required levels of concreting and then placing the mix in its final location, compacting and curing the same complete as per specification & direction of the Engineer-in-charge including computerized batching plant transit mixer with all accessories vibrators etc. inclusive of all other incidental charges in this connection complete.</p> <p>[Cement to be supplied by VENDOR (ACC/ ULTRATECH/ LAFARGE or SIMILAR)]</p>							
5	<p>Reinforcement cement concrete work in M-20 i.e. 1:1.5:2 (1 cement: 1.5 coarse sand: 2 graded stone aggregate 20mm nominal size) including placing the mix in its final location , compacting and curing the same complete as per specification & direction of the Engineer-in-charge but excluding cost of centering and shuttering.</p> <p>(ACC/ ULTRATECH/ LAFARGE or SIMILAR)]</p>	Cum.	1					
6	<p>Reinforcement for reinforced concrete work in all sorts of structures including distribution bars, stirrups, binders, etc initial straightening and removal of loose rust (if necessary), cutting to requisite length, hooking and bending to correct shape, placing in proper position and binding with 16 gauge black annealed wire at every intersection, welding , complete as per drawing and direction.</p> <p>Including supply of steel of 500D TMT bar (SAIL/ TATA TISCON/ or SIMILAR)as per drawing</p>	M.T	7.5					
Sub Total								

(Total Rupees.....)

Ne
26/4/19

* Payment will be made as per Actual Measurement in site

* Total Cost should include GST

* Electricity consumed during construction should be borne by the bidder

* Site inspection possible. Contact: Debashis Bhowmick (M: 9874874672)

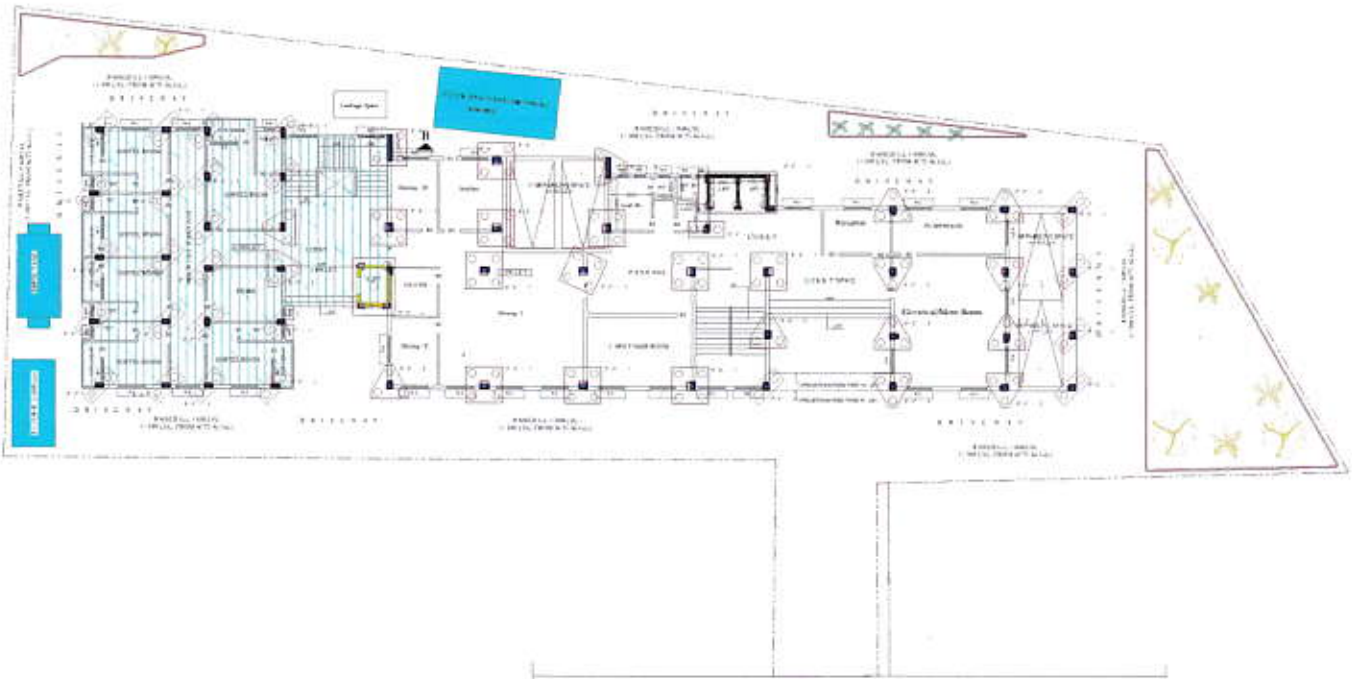
Terms & Conditions:

The project is to be started as soon as the work order is issued and completed in a period of:

PHASE – A (1 Month)

PHASE – B, per floor (3 weeks)

Payments Terms: As per rule



26/4/19